

SUNELWALA

BUILDING MATERIALS TRDG. CO. LLC

Oilfield, Marine, Industrial and Hardware Items

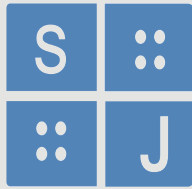


Tel: +971 4 238 5652 / +971 4 238 5752 Mob: +971 50 748 1772
Fax: +971 4 238 5662 info@swbm-fittings.com www.swbm-fittings.com



Your One-Stop Shop For All Your Pipe Fittings Needs

BRANDS



ABOUT US

Welcome to Sunel Wala Building Materials LLC (SWBM), a cherished and family-driven import/wholesale enterprise that has been a beacon of quality in the UAE and MENA Region since our establishment in 2002.

As a reliable one-stop shop, SWBM is your go-to destination for all your pipe fittings needs. Specializing in a diverse range of products, we pride ourselves on providing top-quality materials at competitive prices that meet the highest industry standards. Our commitment to excellence is a testament to our family values, ingrained in every facet of our business.

PRODUCT PORTFOLIO

At SWBM, we offer a comprehensive selection of piping solutions to cater to your diverse requirements. From MS & SS Pipes to Forged Threaded Fittings ranging from 1000 LBS to 6000 LBS, and Butt Weld Fittings in Sch.40, Sch.80, Sch.160, we have you covered. Explore our extensive range of Flanges (SORF, BLRF, THRF, WNRF), Flange Gaskets (Rubber, CNAF, Teflon, SPW, RTJ Gaskets), Valves (Gate, Globe, Check, Y-Strainer, Bronze Safety Valve, Forged Steel Valves), Pipe Nipples, Hoses, Hose Clamps, Camlocks, Rubber Sheets, CNAF Sheets, Hammer Unions, Single & Double Bolt Clamps, and more.

BRANDS IN STOCK

We take pride in offering products from renowned brands, ensuring reliability and durability. Our diverse inventory includes brands such as Both-Well Forged Fittings (Taiwan), TOHO Bronze Valves (Taiwan), Superlite CNAF Gasket Sheets (India), Ferolite Gasket Sheets (India), JARTA Flexible Connectors (China), HEBEI Butt-Weld Fittings (China), SARA SAE Hammer Union & RTJ Gaskets (India), SW Flow Controls (Valves & Fittings), Valtec Valves (Taiwan), JCS Hi-Grip Hose Clips (UK), and ASIAN RTJ Gaskets (India).

INDUSTRIES WE SERVE

At SWBM, we cater to a diverse clientele across industries such as Traders, Oil & Gas, Electro-mechanical, Shipbuilding, Engineering, Marine, Construction, Sugar Plant, Paper Manufacturing, Power, and more.

OUR SERVICES

We go beyond products, offering tailored services such as Pipe Cutting, Beveling, Threading, Welding, Flange Turning, Pipe Fitting Galvanizing, and custom Flange Gasket cutting. Precision and efficiency define our commitment to meeting the unique needs of diverse industries.



INDEX



4	GI/MI FITTINGS MS BUTT-WELD FITTINGS MS THREADED FITTINGS SS BUTT-WELD FITTINGS	14	Y-STRAINER GLOBE ANGLE HOSE VALVE GLOBE HOSE VALVE AIR VENT HEAD VALVE
5	SS THREADED FITTINGS BRASS FITTINGS PIPE NIPPLE SEWAGE NIPPLE	15	2-PC BALL VALVE 2000/3000 PSI 3-PC BALL VALVE 3000 PSI BALL VALVE ANGLE VALVE PN16
6	CAST STEEL FLANGES FORGED FLANGES SS FLANGES BRASS FLANGES	16	DOUBLE BLOCK & BLEED VALVE NEEDLE VALVE SAFETY VALVE CHECK VALVE
7	BI-METALLIC FLANGES BACKING RINGS SPECTACLE BLIND RAISED FACE GASKETS	17	FORGED ELBOW 90D BLOCK ELBOW 90D FORGED TEE (3-WAY) BLOCK TEE (3-WAY)
8	FULL FACE GASKETS RING JOINT GASKETS SPIRAL WOUND GASKETS GATE VALVE	18	FORGED BLOCK CROSS (4-WAY) BLOCK CROSS (4-WAY) MALE TUBE CONNECTOR FEMALE TUBE CONNECTOR
9	BUTTERFLY VALVE BALL VALVE Y-STRAINER CHECK VALVE (NRV)	19	UNION TUBE CONNECTOR ELBOW TUBE CONNECTOR TEE TUBE CONNECTOR PIPE TUBE CLAMP/STAUFF CLAMP
10	GLOBE VALVE FLEXIBLE CONNECTOR HOSES HOSE NIPPLE/CONNECTOR	20	SMS FOOD GRADE CONC.REDUCER SMS FOOD GRADE TEE SMS FOOD GRADE UNION SMS FOOD GRADE ELBOW
11	CHICAGO COUPLING PIPE CLAMPS CAMLOCKS RUBBER SHEETS	21	SMS FOOD GRADE BUTTERFLY VALVE SMS FOOD GRADE CLAMP STRAUB COUPLING HOSE CLIPS (JCS HI-GRIP)
12	ASBESTORS SHEETS (CAF) NON-ASBESTOS SHEETS (CAF) METALLIC-GRAPHITE HAMMER UNION	22	STORZ COUPLING PERROT COUPLING MILLER COUPLING BAUER COUPLING
13	GATE VALVE GLOBE VALVE SDNR CHECK VALVE ANGLE VALVE SDNR	23	SEALING SOLUTIONS GASKETS & PACKING



GI / MI Fittings

GI / MI Fittings

Products - Elbow 90D, Elbow 45D, Union, Cap, Socket, R/Socket, Bush, Tee, R/Tee, Plug

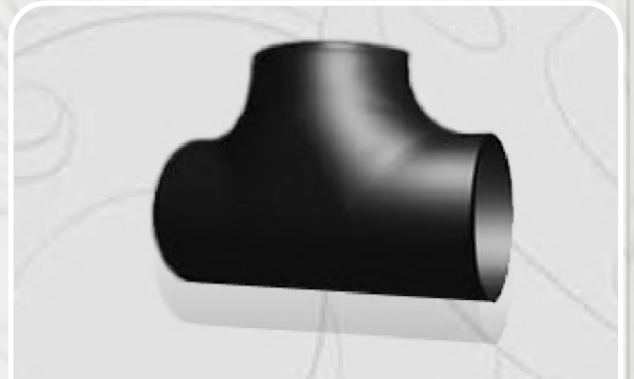
Sizes - 1/8" to 6"

MS Butt-Weld Fittings

Products - Elbow 90D, Elbow 45D, Cap, Tee, R/Tee, Concentric Reducer, Eccentric Reducer

Schedule - #40 , #80 ,#160

Sizes - ¼" to 24"



MS Butt-Weld Fittings



MS Threaded Fittings

MS Threaded Fittings

Products - Elbow 90D, Elbow 45D, Union, Cap, Socket, R/Socket, Bush, Tee, R/Tee, Plug

Pressure - 1000 PSI , 2000PSI ,3000PSI ,6000PSI

Sizes - ¼" to 4"

SS Butt-Weld Fittings

Products - Elbow 90D, Elbow 45D, Cap, Tee, R/Tee, Concentric Reducer, Eccentric Reducer, Stub End

Schedule - #10 , #40

Sizes - ¼" to 12"



SS Butt-Weld Fittings



SS Threaded Fittings

SS Threaded Fittings

Products - Elbow 90D, Elbow 45D, Cap, Tee, R/Tee, Union, Socket, R/Socket, Plug, Bush

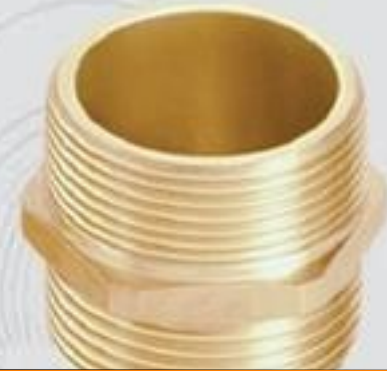
Pressure - CL150 (Low Pressure) , 3000 PSI (High Pressure)

Sizes - 1/4" to 4"

Brass Fittings

Products - Elbow 90D, Socket, Hex Nipple, R/Bush, Tee, Plug

Sizes - 1/8" to 4"



Brass Fittings

Pipe Nipple

Products - MS long Nipple, SS long Nipple, GI long nipple & Brass long Nipple

Schedule - #40 , #80 , #160

Sizes - Pipe Size 1/2" to 6" & length size from 1/2" to 200"



Pipe Nipple

Swage Nipple

Products - Concentric & Eccentric Swage nipple

Type - TBE , TSE, TLE, PBE, PSE, PLE, BBE, BSE, BLE

Material - Carbon Steel And Stainless Steel



Swage Nipple



Cast Steel Flanges

Cast Steel flanges

Products - Slip-on (SO), Weld-Neck (WN), Threaded, Blind

Ratings - PN10, PN16, PN25, CL150, CL300, 5K, 10K

Sizes - ½" to 24" (S/O, W/N, Blind)
½" to 6" (Threaded)

Forged Flanges

Products - Slip-on (SO), Weld-Neck (WN), Threaded, Blind, Lap Joint, Socket Weld (SW)

Ratings - PN10, PN16, PN25, CL150, CL300, 5K, 10K

Material- A105 (China)
A105 & A350 LF2 (European)

Sizes - ½" to 24" (S/O, W/N, Blind)
½" to 6" (Threaded)



Forged Flanges



SS Flanges

SS Flanges

Products - Slip-on (SO), Weld-Neck (WN), Threaded, Blind (BL), Lap Joint, Socket Weld (SW)

Ratings - PN10, PN16, CL150, CL300

Sizes - ½" to 48" (S/O, W/N, Blind) ½" to 6" (Threaded, Lap Joint, Socket Weld)

Brass Flanges

Products - Slip-on (SO), Threaded

Ratings - PN16, CL150

Sizes - ½" to 12"



Brass Flanges



Bi-Metallic Flanges

Bi-Metallic Flanges

Products - Composite flange comprising of epoxy powder coated flange ring and sweat-end brass coupler, suitable for connecting copper or brass pipes with each other or with steel pipes. Economical alternative to full brass flanges.

Ratings - PN16 & CL150

Sizes - 1" to 8"

Backing Rings

Ratings - PN16 & CL150

Material - 1) Carbon Steel ASTM A 36 or A 516 Gr 70

2) SS304, SS304L, SS304H, SS316, SS316L, SS316H Almost any other steel, stainless steel or alloy steel can be supplied

Sizes - ½" to 24"

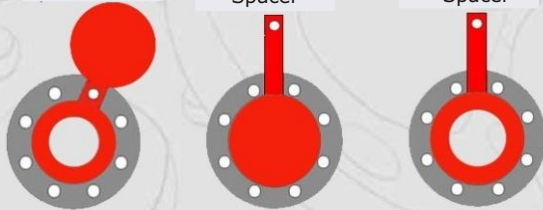


Backing Rings

Spectacle Blind

Spacer

Spacer



Spectacle Blind

Spectacle Blind

Ratings - PN16 & CL150

Material - 1) Carbon Steel ASTM A 36 or A 516 Gr 70

2) SS304, SS304L, SS304H, SS316, SS316L, SS316H Almost any other steel, stainless steel or alloy steel can be supplied

Sizes - ½" to 48"

Raised Face Gaskets

Products - Gasket to suit the Raised Face of the flange commonly known as RF Gasket

Material - Neoprene Rubber, EPDM Rubber, Asbestos (CAF), Non-Asbestos (CNAF), Teflon (PTFE)

Sizes - ½" to 48"



Raised Face Gaskets



Full Face Gaskets

Full Face Gaskets

Products - Gaskets with matching Bolt Holes of the Flange commonly known as FF Gasket

Material - Neoprene Rubber, EPDM Rubber, Asbestos (CAF), Non-Asbestos (CNAF), Teflon (PTFE)

Sizes - ½" to 48"

Ring Joint Gaskets

Products - Gaskets to fit in Ring Groove of the Flanges commonly known as RTJ Gasket

Types - R, BX, RX

Material - Low Carbon Steel (LCS) & Stainless Steel 316L

Sizes - R-11 upto R-105 , BX-150 upto BX-303, RX-20 upto RX-82



Ring Joint Gaskets



Spiral Wound Gasket

Spiral Wound Gasket

Products - Spiral-Wound Gaskets are made of a preformed metallic V-shaped strip and a soft filler material wound together under pressure, with an outer guide ring commonly known as SPWD Gasket

Type - CS & SS Outer Ring, with or without SS inner ring

Ratings - CL150, CL300, CL600, CL900 CL1500, CL2500

Sizes - ½" to 48"

Gate Valve

Material - Cast Iron, Cast Steel, Stainless Steel, Brass, Bronze

Threaded and Socketweld Ends -

Sizes - 1/4" to 6"

Rating - CL800, CL1500

Flange End

Sizes - 1/2" to 24"

Rating- PN10 , PN16, PN25, PN125, CL300, 5K, 10K



Gate Valve



Butterfly Valve

Butterfly Valve

Material - CI, CS , SS

Disc - Ductile iron, Brass, Stainless Steel

Type - Lever operated and Gear operated

Models - Wafer Type & Lug Type

Rating - PN16 & CL150

Sizes - 2" to 24"

Ball Valve

Type - In Threaded- Body - 1pc Body, 2pc Body, 3pc Body

Bore - Full Bore, Reduced Bore

Threaded and Socketweld Ends -

Sizes - 1/4" to 6"

Rating - CL800, CL1500

Flange End -

Size - 1/2" to 24"

Rating - PN10 , PN16, PN25, PN125, CL300, 5K, 10K



Ball Valve

Check Valve (NRV)

Material - Cast Iron, Cast Steel, Stainless Steel, Brass, Bronze

Threaded and Socketweld Ends -

Sizes - 1/4" to 6"

Rating - CL800, CL1500

Flange End -

Sizes - 1/2" to 24"

Rating - PN10 , PN16, PN25, PN125, CL300, 5K 10K



Check Valve (NRV)

Y-Strainer

Material - Cast Iron, Cast Steel, Stainless Steel, Brass, Bronze

Threaded and Socketweld Ends

Sizes - 1/4" to 6"

Rating - CL800, CL1500

Flange End -

Sizes - 1/2" to 24"

Rating - PN10 , PN16, PN25, PN125, CL300, 5K, 10K



Y-Strainer



Globe Valve

Globe Valve

Material - Cast Iron, Cast Steel, Stainless Steel, Brass, Bronze

Threaded and Socketweld Ends

Sizes - 1/4" to 6"

Rating - CL800, CL1500

Flange End -

Sizes - 1/2" to 24"

Rating - PN10 , PN16, PN25, PN125, CL300, 5K, 10K

Flange Type

Sizes - 2" to 24"

Rating - PN16, CL150

Union Type

Sizes - 1/4" to 3"



Flange Type



Hoses

Hoses

Sizes - Green Suction Hose - Size - 1/2" to 6"

Steel Wire Hose - Size - 1/2" to 6"

Blue Flat Hose - Size - 2" to 10"

Reinforced Hose - Size - 1/4" to 3"

Rubber Air Hose - Size - 1/4" to 2"

Fire Hose - Size - 2" to 4"

Hose Nipple / Hose Connector

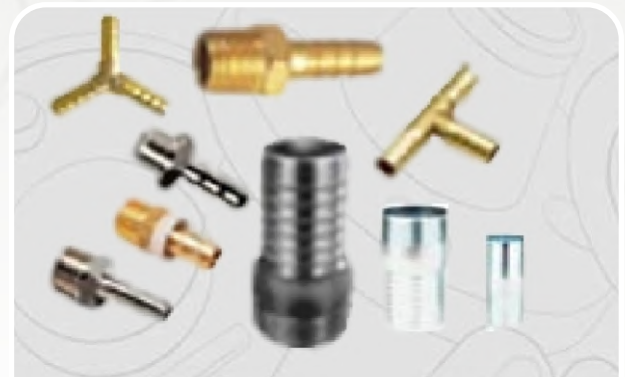
Product - 1) King Nipple / Hose Nipple - One side thread and one side hose connection

2) Hose Mender - Both Side Hose Connection

3) Tee Connection - Three Way Hose Connection

Sizes - 1/4" to 8" (GI)

1/4" to 4" (Brass & SS)



Hose Nipple/Connector



Chicago Coupling

Chicago Coupling

Product - Hose End, Male End, Female End, Three Way End

Sizes - 1/4" to 2"

Pipe Clamps

Sizes - 1) Hose Clip - #000 to #12 or 3/8", to 11" or 9mm to 281mm

2) Double Bolt Clamp - Sizes SL 22 to SL1275 or 3/8" to 12"



Pipe Clamps



Camlock

Camlock

Product - A - Female Thread x Male Camlock
 B - Male Thread x Female Camlock
 C - Hose x Female Camlock
 D - Female Thread x Female Camlock
 E - Hose x Male Camlock
 F - Male Thread x Male Camlock
 DC - Dust Cap Camlock
 DP - Dust Plug Camlock

Material - Aluminium, Brass, Stainless Steel

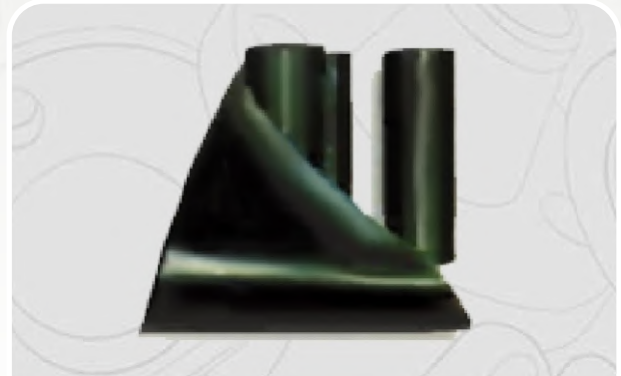
Sizes - 1/2" to 6"

Rubber Sheets

Products - 1) Neoprene Rubber Gasket Sheets
 2) Neoprene Rubber Gasket Sheets with Cotton Insertion
 3) EPDM Rubber gasket sheet

Thickness - 1.5mm to 12mm

Sizes - 1.2Mtr x 10Mtr Roll or 18KG Roll



Rubber Sheets



Asbestos Sheets (CAF)

Asbestos Sheets (CAF)

Products - Asbestos Gasket Sheets

Thickness - 1.5mm upto 6mm

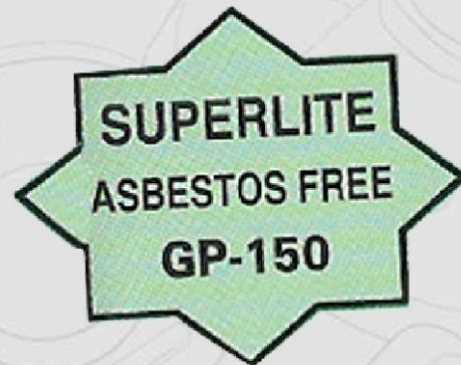
Sizes - 1.5Mtr x 1.5Mtr or 1.5Mtr x 1.35Mtr

Non-Asbestos Sheets (CNAF)

Products - Non-Asbestos Gasket Sheets

Thickness - 1.5mm upto 6mm

Sizes - 1.5Mtr x 1.5Mtr



Non-Asbestos Sheets (CNAF)



Metallic-Graphite Sheets

Metallic-Graphite Sheets

Products - Metallic-Graphite Gasket Sheets

Thickness - 1.5mm upto 6mm

Sizes - 1.5Mtr x 1.5Mtr

Hammer Union

Working Pressure - 1000 to 9000 PSI

FIG No - 50 to 602

Connection - Threaded and Butt Weld End

Sizes - 1" to 12"



Hammer Union



Gate Valve

Gate Valve

Material - Cast Iron, Bronze, Cast Steel

Flanged - JIS 5K / JIS 10K/ JIS 16K/ JIS 20K

Globe Valve SDNR

Material - Cast Iron, Bronze, Cast Steel

Flanged - JIS 5K / JIS 10K/ JIS 16K/ JIS 20K



Globe Valve SDNR



Check Valve

Check Valve

Material - Cast Iron, Bronze, Cast Steel

Flanged - JIS 5K / JIS 10K/ JIS 16K/ JIS 20K

Angle Valve SDNR

Material - Cast Iron, Bronze, Cast Steel

Flanged - JIS 5K / JIS 10K/ JIS 16K/ JIS 20K



Angle Valve SDNR



Y-Strainer

Y-Strainer

Material - Cast Iron, Bronze, Cast Steel

Flanged - JIS 5K / JIS 10K/ JIS 16K/ JIS 20K

Globe Angle Hose Valve

Material - Cast Iron, Bronze

Flanged - JIS 5K / JIS 10K/ JIS 16K/ JIS 20K



Globe Angle Hose Valve

Globe Hose Valve

Material - Cast Iron, Bronze

Flanged - JIS 5K / JIS 10K/ JIS 16K/ JIS 20K



Globe Hose Valve

Air Vent Head Valve

Material - Cast Iron

Flanged - JIS 5K / JIS 10K/ JIS 16K/ JIS 20K



Air Vent Head Valve



**2-pc Ball Valve
2000 Psi / 3000 Psi**

2-pc Ball Valve 2000 Psi / 3000 Psi

Material - SS316

Connection - NPT / SW

Sizes - 1/2", 3/4", 1", 1-1/4", 1-1/2", 2"

3-pc Ball Valve 3000 Psi

Material - SS316

Connection - NPT / SW

Sizes - 1/2", 3/4", 1", 1-1/4", 1-1/2", 2"



3-pc Ball Valve 3000 Psi

Ball Valve

Material - SS316

Pressure - 3000 psi / 6000 psi / 10000 psi

Sizes - 1/4", 3/8", 1/2", 3/4", 1", 1-1/4",
1-1/2", 2"

Lines - FxF / MxF



Ball Valve

Angle Valve PN16

Material - Cast Iron

Flanged - JIS 5K / JIS 10K / JIS 16K / JIS 20K



Angle Valve PN16



Double Block & Bleed Valve

Double Block & Bleed Valve

Material - CS / SS316

Connection - Threaded / Flanged

Sizes - 1/2", 3/4", 1", 1-1/4", 1-1/2", 2",
2-1/2", 3", 4", 5", 6"

Needle Valve

Material - SS316

Pressure - 3000 psi / 6000 psi / 10000 psi

Sizes - 1/4", 3/8", 1/2", 3/4", 1", 1-1/4",
1-1/2", 2"

Lines - FxF / MxF



Needle Valve

Safety valve

Material - SS316

Pressure - 10 Bar / 20 Bar / 25 Bar

Sizes - 1/2", 3/4", 1"



Safety Valve

Check valve

Material - SS316

Pressure - 3000 psi / 6000 psi / 10000 psi

Sizes - 1/4", 3/8", 1/2", 3/4", 1", 1-1/4",
1-1/2", 2"



Check Valve



Forged Elbow 90D

Forged Elbow 90D

Material - SS316

Pressure - 3000 psi / 6000 psi

Sizes - 1/4", 3/8", 1/2", 3/4", 1", 1-1/4",
1-1/2", 2"

Block Elbow 90D

Material - SS316

Pressure - 10000 psi

Sizes - 1/4", 3/8", 1/2", 3/4", 1", 1-1/4",
1-1/2", 2"



Block Elbow 90D



Forged Tee (3-way)

Forged Tee (3-way)

Material - SS316

Pressure - 3000 psi / 6000 psi

Sizes - 1/4", 3/8", 1/2", 3/4", 1", 1-1/4",
1-1/2", 2"

Block Tee (3-way)

Material - SS316

Pressure - 10000 psi

Sizes - 1/4", 3/8", 1/2", 3/4", 1", 1-1/4",
1-1/2", 2"



Block Tee (3-way)



Forged Block Cross (4-way)

Forged Block Cross (4-way)

Material - SS316

Pressure - 3000 psi / 6000 psi

Sizes - 1/4", 3/8", 1/2", 3/4", 1", 1-1/4",
1-1/2", 2"

Block Cross (4-way)

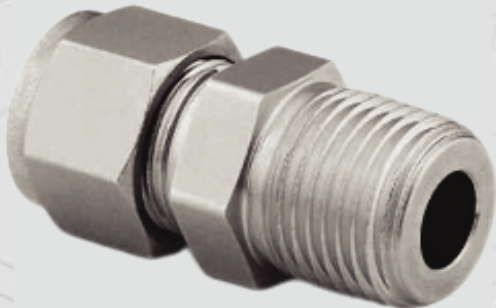
Material - SS316

Pressure - 10000 psi

Sizes - 1/4", 3/8", 1/2", 3/4", 1", 1-1/4",
1-1/2", 2"



Block Cross (4-way)



Male Tube Connector

Male Tube Connector

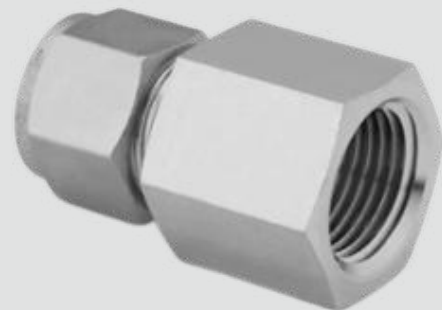
Material - SS316, Brass

Sizes - 1/4"x1/4"x 1/4"x1/8", 1/2"x1/4",
3/8"x3/8", 1/2"x3/8", 1/2"x1/2",
3/4"x1/2", 3/4"x3/8", 3/4"x3/4",
1"x1/2", 1"x3/4", 1"x1",
6mmx6mm, 8mmx8mm,
10mmx10mm, 12mmx12mm

Female Tube Connector

Material - SS316, Brass

Sizes - 1/4"x1/4"x 1/4"x1/8", 1/2"x1/4",
3/8"x3/8", 1/2"x3/8", 1/2"x1/2",
3/4"x1/2", 3/4"x3/8", 3/4"x3/4",
1"x1/2", 1"x3/4", 1"x1",
6mmx6mm, 8mmx8mm,
10mmx10mm, 12mmx12mm



Female Tube Connector



Union Tube Connector

Union Tube Connector

Material - SS316, Brass

Sizes - 1/4"x1/4"x 1/4"x1/8", 1/2"x1/4",
3/8"x3/8", 1/2"x3/8", 1/2"x1/2",
3/4"x1/2", 3/4"x3/8", 3/4"x3/4",
1"x1/2", 1"x3/4", 1"x1",
6mmx6mm, 8mmx8mm,
10mmx10mm, 12mmx12mm

Elbow Tube Connector

Material - SS316, Brass

Sizes - 1/4"x1/4"x 1/4"x1/8", 1/2"x1/4",
3/8"x3/8", 1/2"x3/8", 1/2"x1/2",
3/4"x1/2", 3/4"x3/8", 3/4"x3/4",
1"x1/2", 1"x3/4", 1"x1",
6mmx6mm, 8mmx8mm,
10mmx10mm, 12mmx12mm



Elbow Tube Connector



Tee Tube Connector

Tee Tube Connector

Material - SS316, Brass

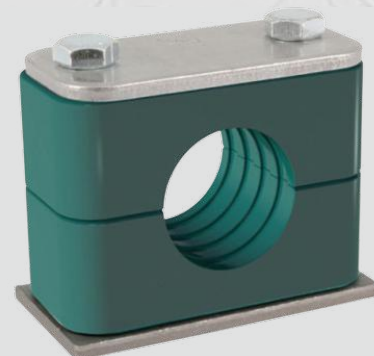
Sizes - 1/4"x1/4"x 1/4"x1/8", 1/2"x1/4",
3/8"x3/8", 1/2"x3/8", 1/2"x1/2",
3/4"x1/2", 3/4"x3/8", 3/4"x3/4",
1"x1/2", 1"x3/4", 1"x1",
6mmx6mm, 8mmx8mm,
10mmx10mm, 12mmx12mm

Pipe Tube Clamp / Stauff Clamp

Plates - Stainless Steel / Galvanized

Body - PVC

Sizes - 6, 8, 10, 12, 13.5, 16, 17.2, 19,
21.3, 22, 25, 26.9, 28, 33.7, 38,
42, 48.3, 60.3



Pipe Tube Clamp / Stauff Clamp



SMS Food Grade Concentric Reducer

SMS Food Grade Concentric Reducer

Material - SS316

Connection - Welded

Sizes - 1/2", 3/4", 1", 1-1/4", 1-1/2", 2", 2-1/2", 3", 4", 5", 6"

SMS Food Grade Tee

Material - SS316

Connection - Welded

Sizes - 1/2", 3/4", 1", 1-1/4", 1-1/2", 2", 2-1/2", 3", 4", 5", 6"



SMS Food Grade Tee

SMS Food Grade Union

Material - SS316

Connection - Welded

Sizes - 1/2", 3/4", 1", 1-1/4", 1-1/2", 2", 2-1/2", 3", 4", 5", 6"



SMS Food Grade Union

SMS Food Grade Elbow

Material - SS316

Connection - Welded

Sizes - 1/2", 3/4", 1", 1-1/4", 1-1/2", 2", 2-1/2", 3", 4", 5", 6"



SMS Food Grade Elbow



SMS Food Grade Butterfly Valve

SMS Food Grade Butterfly Valve

Material - SS316

Connection - Welded

Sizes - 1/2", 3/4", 1", 1-1/4", 1-1/2", 2", 2-1/2", 3", 4", 5", 6"

SMS Food Grade Clamp

Material - SS316

Connection - Welded

Sizes - 1/2", 3/4", 1", 1-1/4", 1-1/2", 2", 2-1/2", 3", 4", 5", 6"



SMS Food Grade Clamp



Straub Coupling / Pipe Repair Clamp

Straub Coupling / Pipe Repair Clamp

Material - SS304

Model - RCH-S

Sizes - 1", 1-1/4", 1-1/2", 2", 2-1/2", 3", 4", 5", 6", 8", 10", 12"

Hose Clips (Jcs Hi-grip)

Material - SS304 / Galvanized Steel

Sizes - HG-12, HG-16, HG-20, HG-22, HG-25, HG-30, HG-35, HG-40, HG-45, HG-50, HG-55, HG-60, HG-70, HG-80, HG-90, HG-100, HG-120, HG-140, HG-160



Hose Clips (Jcs Hi-grip)



Storz Coupling

Storz Coupling

Material - Aluminum

Connection - Hose / Male / Female

Sizes - 2", 2-1/2", 3", 4"

Perrot Coupling

Material - Galvanized Steel

Sizes - 2", 3", 4", 6"



Perrot Coupling

Miller Coupling

Material - Galvanized Steel

Sizes - 2", 3", 4", 6", 8", 10", 12"



Miller Coupling

Bauer Coupling

Material - Galvanized Steel

Sizes - 2", 3", 4", 6", 8"



Bauer Coupling

SEALING SOLUTIONS

Gaskets & Packings

Manufacturers of Soft Cut Flange Gaskets

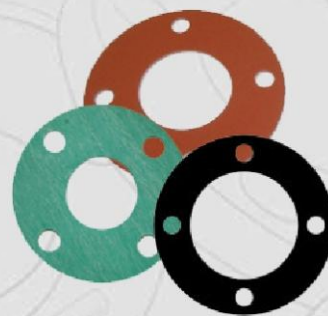
In Neoprene Rubber, EPDM Rubber,
Compressed Asbestos Fibre (**CAF**),
Compressed Non-Asbestos Fibre (**CNAF**),
Teflon, Graphited / Metallic Fibre Gaskets

In Full Face (**FF**) and Raised Face (**RF**) Type or any
other shape as per drawing or sample

Thickness from 1mm to 10mm



Raised Face Gaskets



Full Face Gaskets



Sunel Wala Building Materials Trading Co. LLC

Al Nakheel Road, Deira, Dubai P.O. Box - 65581

Tel. : +9714 238 5652 / +9714 238 5752

Fax : +9714 238 5662 **Mob. :** 971 507 481 772

Email Id : info@swbm-fittings.com **Website :** www.swbm-fittings.com